

CORO DEI PELLEGRINI

Andante maestoso

B II

81

1/2 B IV

B I

B II

B IV

B II

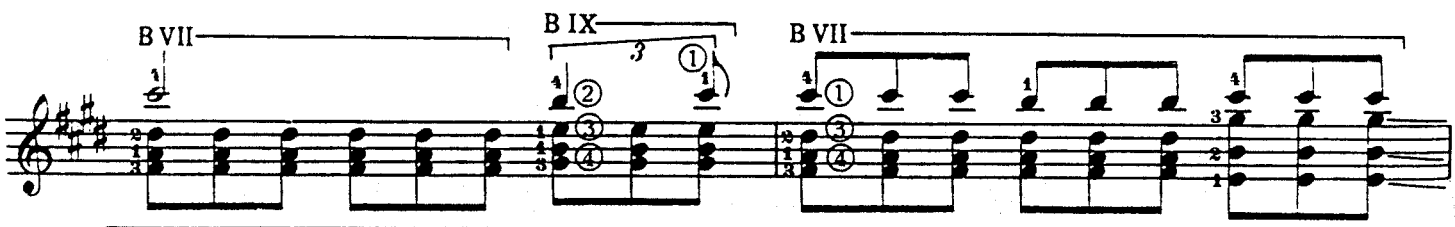
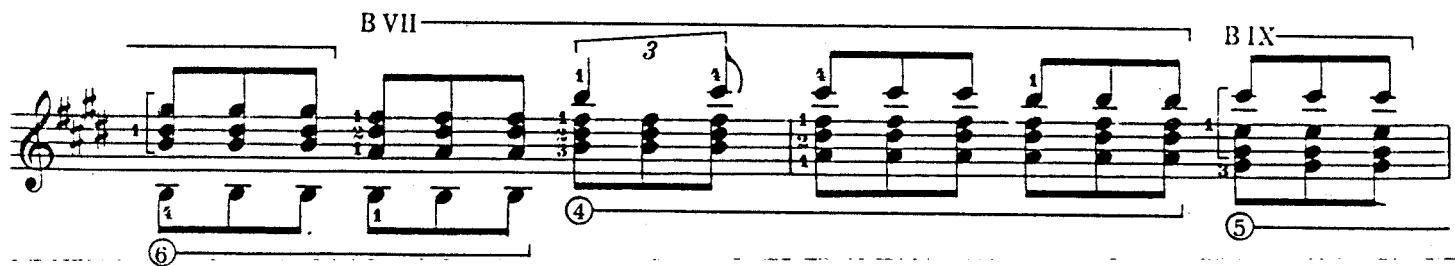
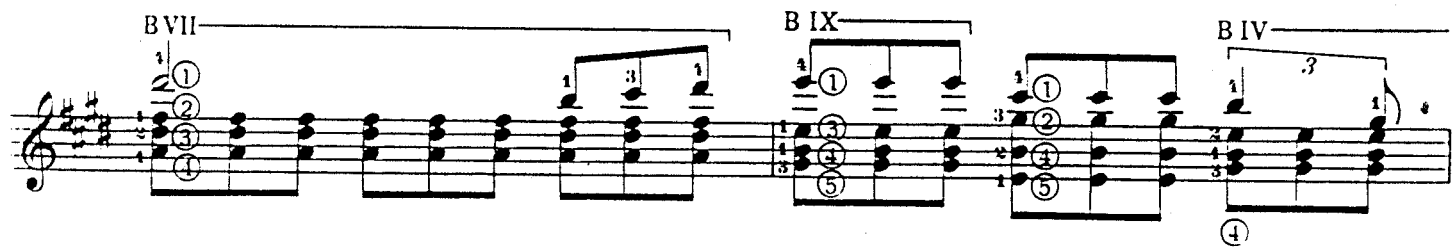
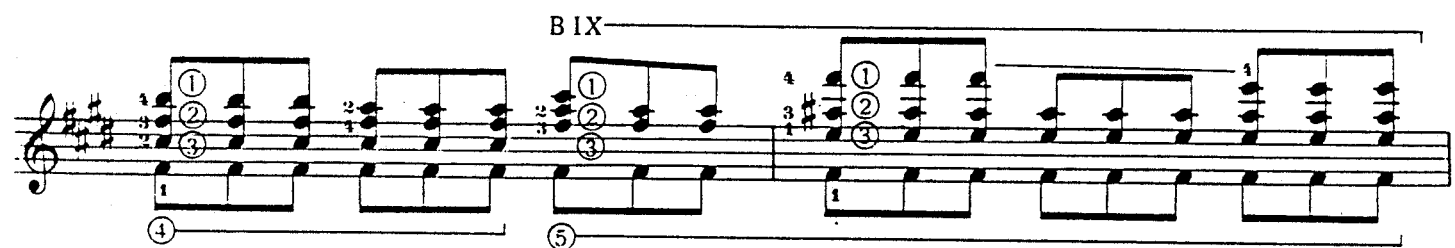
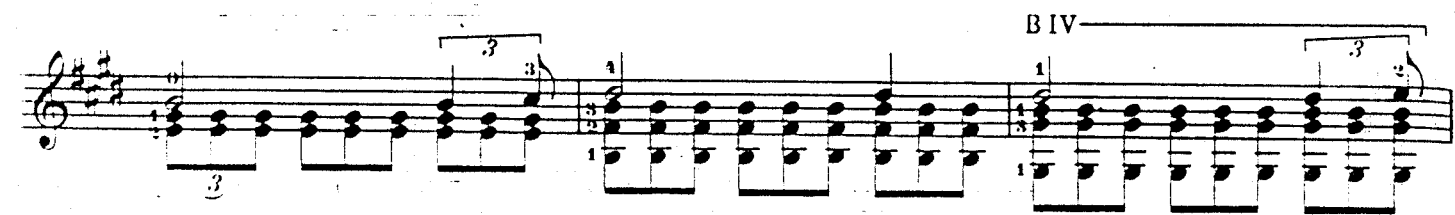
B I

B II

B I

1/2 B II

B I



B VI

B VII



⑥

Detailed description: This block contains the first two staves of musical notation. The first staff is labeled 'B VI' and the second 'B VII'. Both staves feature complex rhythmic patterns with triplets and sixteenth notes. Fingering numbers (1-5) are indicated above the notes. A circled '6' is located at the end of the second staff.

B IX

B VII

B IX

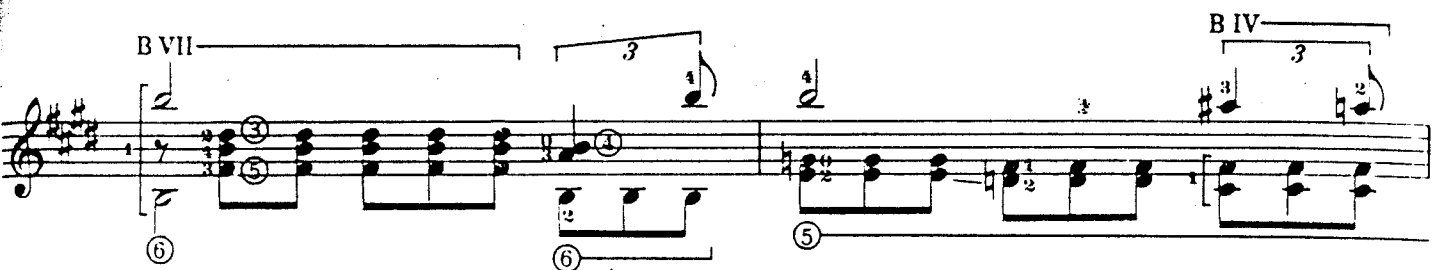


⑤

Detailed description: This block contains the third, fourth, and fifth staves. The third and fifth staves are labeled 'B IX' and the fourth 'B VII'. The notation continues with complex rhythmic patterns and fingering. A circled '5' is located below the fourth staff.

B VII

B IV

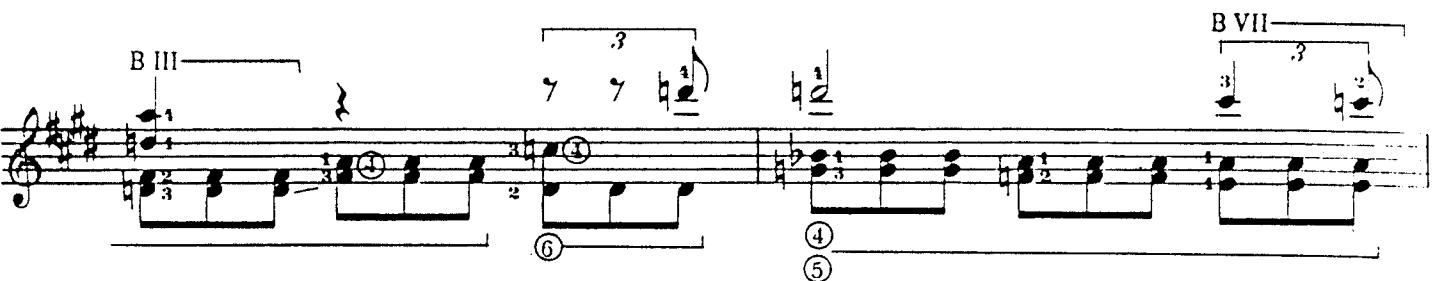


⑥

Detailed description: This block contains the sixth and seventh staves. The sixth staff is labeled 'B VII' and the seventh 'B IV'. The notation includes complex rhythmic patterns and fingering. A circled '6' is located below the sixth staff.

B III

B VII



⑥

Detailed description: This block contains the eighth and ninth staves. The eighth staff is labeled 'B III' and the ninth 'B VII'. The notation includes complex rhythmic patterns and fingering. A circled '6' is located below the eighth staff.

B VI

B VIII

B X



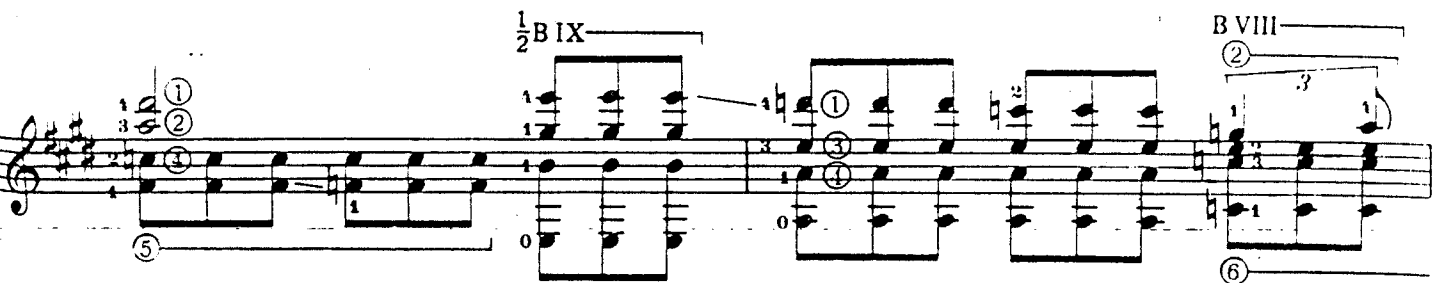
④

⑤

Detailed description: This block contains the tenth, eleventh, and twelfth staves. The tenth staff is labeled 'B VI', the eleventh 'B VIII', and the twelfth 'B X'. The notation includes complex rhythmic patterns and fingering. Circled numbers '4' and '5' are located below the eleventh and twelfth staves respectively.

$\frac{1}{2}$ B IX

B VIII



⑥

Detailed description: This block contains the thirteenth and fourteenth staves. The thirteenth staff is labeled ' $\frac{1}{2}$ B IX' and the fourteenth 'B VIII'. The notation includes complex rhythmic patterns and fingering. A circled '6' is located below the fourteenth staff.

B VII

B II



④

⑥

⑤

Detailed description: This block contains the fifteenth and sixteenth staves. The fifteenth staff is labeled 'B VII' and the sixteenth 'B II'. The notation includes complex rhythmic patterns and fingering. Circled numbers '4', '6', and '5' are located below the fifteenth and sixteenth staves respectively.