

6

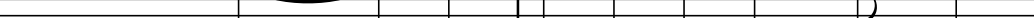
8

Example 10, measure 8. The staff shows a sequence of notes: a quarter rest, an eighth note G4, a quarter note A4, an eighth note B4, a quarter note C5, an eighth note B4, a quarter note A4, an eighth note G4, a quarter note F#4, an eighth note E4, a quarter note D4, and a half note C4. There are slurs over the eighth notes G4-A4-B4 and A4-G4-F#4, and another slur over the eighth notes B4-A4-G4.

11

Example 11

14 **C7**



F

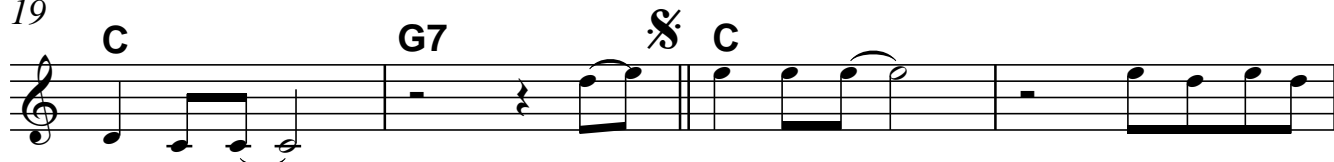
she's all a - bout, that she's a wo-man through and through.____
mo tions re - veal she's not the per-son that I thought I knew.____

16



Se's a com - pli-ca-ted la-dy, so co-lor my ba - by

19



mood-y blue.

Oh, mood-y blue,

tell me am I

23



get-tin' through.

I keep hang - in' on

try - na

26



learn the song but I nev-er do.

Oh, mood-y blue,

30



tell me who I'm talk-in' to.

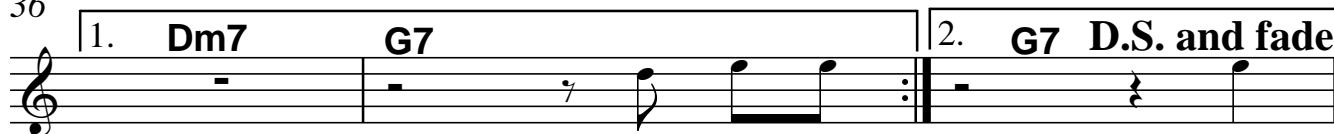
Yuo're like

33



night and day, and it's hard to say which one is you.

36



(2) Well, when Mon-

Oh,